

## Tapping Instructions

## Parts List



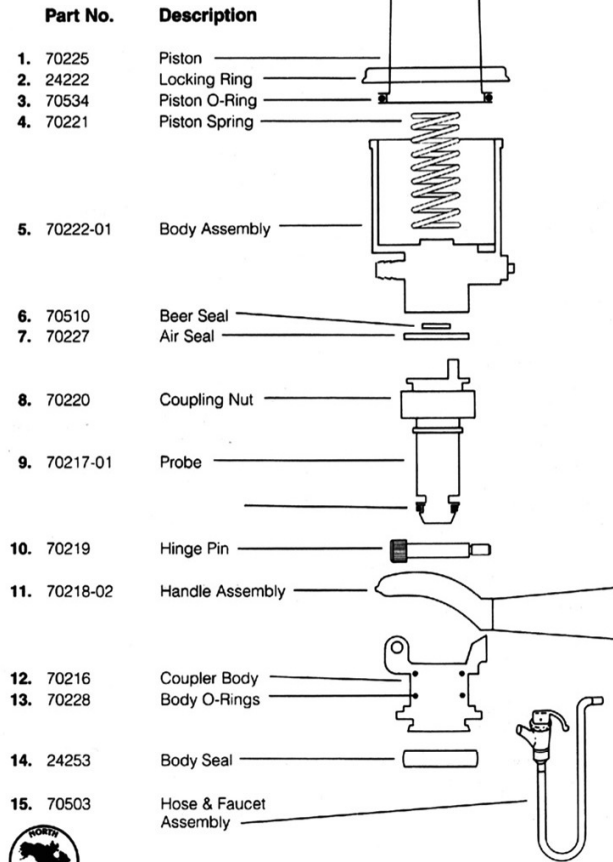
1. Align notches in base of coupler with corresponding lugs located in the top of the keg valve.

2. Rotate coupler one-quarter turn clockwise to engage the keg lugs.



3. Pull the lever handle out and push down to locked position. You are now ready to pour beer.

4. Before pumping, open the faucet to start the flow of beer, only pump when the beer flow begins to slow. *Don't over pump this will cause foam.*



San Antonio, Texas

U.S. PATENT NO. 4711377



Guide To Proper Tapping, Cleaning & Caring For Your Bronco Pump

