



**BF1001**



**SF2003**



**BF1003**



**SF2004**



**4301**



**70103-05**



**70102-01**



**70103-05-304**



**70102-02**



**70104**



**70103-04**



**BF3000**

MODEL #	DESCRIPTION	PK
<b>BF1001</b>	Beer Faucet, Chrome Plated with Brass Lever	<b>24</b>
<b>BF1001SC</b>	Beer Faucet, Chrome Plated with Brass Lever, Self-Closing	<b>24</b>
<b>BF1002</b>	Beer Faucet, Chrome Plated with Stainless Lever	<b>24</b>
<b>BF1001SC</b>	Beer Faucet, Chrome Plated with Brass Lever, Self-Closing	<b>24</b>
<b>BF1002SC-SS</b>	Beer Faucet, Stainless Steel with Stainless Lever, 304 Body with 303 Shaft, Self-Closing	<b>24</b>
<b>BF1002SS</b>	Beer Faucet, Stainless Steel Faucet with Stainless Steel Lever, 304 Body with 303 Shaft	<b>24</b>
<b>BF1002SS-304</b>	Beer, Wine, and Cider Faucet, Stainless Steel Body with Stainless Lever, All 304	<b>24</b>
<b>BF1003</b>	Beer Faucet, Brass with Gold (PVD) Finish and Brass Lever	<b>24</b>
<b>BF1004</b>	Beer Faucet, Brass with Gold (PVD) Finish and Stainless Lever	<b>24</b>
<b>SF2003</b>	Stout Faucet, 304 Stainless Steel, Polished Finish	<b>6</b>
<b>SF2004</b>	Stout Faucet, 304 Stainless Steel, Gold (PVD) Finish	<b>6</b>
<b>BF3000</b>	Beer Faucet with Flow Control Compensator, 304 Stainless Steel, with Shank	<b>1</b>

MODEL #	DESCRIPTION	PK
<b>4301</b>	Faucet Lever Knob, Black Plastic	<b>10</b>
<b>70102-01</b>	Faucet Lever, Brass	<b>10</b>
<b>70102-02</b>	Faucet Lever, Stainless Steel	<b>10</b>
<b>70103-04</b>	Faucet Shaft Assembly with Seat, Chrome Plated Brass	<b>10</b>
<b>70103-05</b>	Faucet Shaft Assembly with Seat, 303 Stainless	<b>10</b>
<b>70103-05-304</b>	Faucet Shaft Assembly with Seat, 304 Stainless	<b>10</b>
<b>70104</b>	Faucet Ball Washer	<b>10</b>

# 48 FAUCET PARTS

MODEL #	DESCRIPTION	PK
70105	Faucet Lever Collar, Chrome	10
70107	Faucet Body Gasket	10
70108	Faucet Friction Washer	10
70109	Faucet Shaft Nut, Nickle Plated Brass	10
70110	Faucet Shaft Valve Seat	10
70166-01	Faucet Bonnet, Chrome Plated Brass	10
<b>BF1000SC-Kit</b>	Faucet Retrofit Kit - Convert Standard Faucet to Self-Closing	1
SF2000-13	Stout Faucet Nozzle O-Ring	1
SF2000-14	Stout Faucet Jet Disc, Stainless Steel	1
SF2000-15	Stout Faucet Regulation Cone, Plastic	1
SF2000-16	Stout Faucet Leak Out Pipe, Stainless Steel	1
SF2000-2	Stout Faucet Lever Screw, Stainless Steel	1
SF2000-3	Stout Faucet Sliding Cap, Plastic	1
SF2000-4	Sout Faucet Screw Cap O-Ring	1
SF2000-9	Stout Faucet Upper Piston O-Ring	1
SF2000-1	Stout Faucet Lever, Chrome Plated Brass	1



70105



70107



70108



70166-01



BF1000SC-Kit

**For Ale & Lager type beers, the pouring process is:**

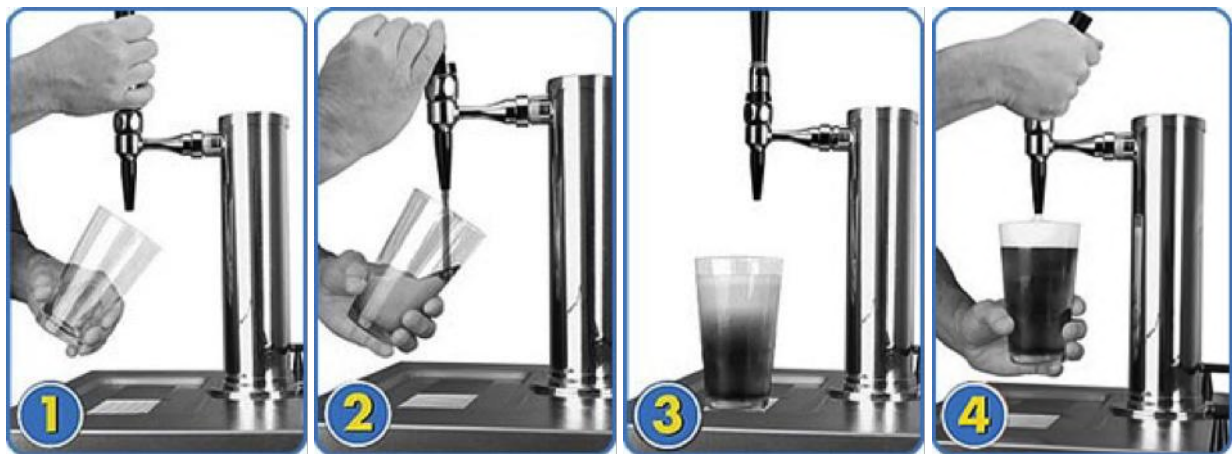
Start with a glass clean of any residue, including soap film.



1. Place the glass at a 45° angle, one inch below the faucet. Do not let the glass touch the faucet. Open the faucet completely in one, swift motion.
2. After the glass has reached ½ full, gradually bring the glass to an upright position.
3. Let the remaining beer pour straight down the middle. This ensures proper release of CO<sub>2</sub> by producing a ¾" to 1" foam head.
4. Close the faucet completely and quickly.

**For Stout type of beers, the pouring process is:**

Start with a glass clean of any residue, including soap film.



1. Place the glass at a 45° angle, one inch below the faucet. Do not let the glass touch the faucet. Open the faucet completely in one, swift motion.
2. Once the glass is ¾ full, close the faucet completely in one, quick motion.
3. Place the glass on the bar counter and allow the surging beer to settle.
4. Once the surge has settled, fill the glass to the brim, pouring straight down the middle of the glass. Close the faucet completely in one, swift motion.