



BF1001



SF2003



BF1003



SF2004



4301



70103-05



70102-01



70103-05-304



70102-02



70104



70103-04



BF3000

MODEL #	DESCRIPTION	PK
BF1001	Beer Faucet, Chrome Plated with Brass Lever	24
BF1001SC	Beer Faucet, Chrome Plated with Brass Lever, Self-Closing	24
BF1002	Beer Faucet, Chrome Plated with Stainless Lever	24
BF1001SC	Beer Faucet, Chrome Plated with Brass Lever, Self-Closing	24
BF1002SC-SS	Beer Faucet, Stainless Steel with Stainless Lever, 304 Body with 303 Shaft, Self-Closing	24
BF1002SS	Beer Faucet, Stainless Steel Faucet with Stainless Steel Lever, 304 Body with 303 Shaft	24
BF1002SS-304	Beer, Wine, and Cider Faucet, Stainless Steel Body with Stainless Lever, All 304	24
BF1003	Beer Faucet, Brass with Gold (PVD) Finish and Brass Lever	24
BF1004	Beer Faucet, Brass with Gold (PVD) Finish and Stainless Lever	24
SF2003	Stout Faucet, 304 Stainless Steel, Polished Finish	6
SF2004	Stout Faucet, 304 Stainless Steel, Gold (PVD) Finish	6
BF3000	Beer Faucet with Flow Control Compensator, 304 Stainless Steel, with Shank	1

MODEL #	DESCRIPTION	PK
4301	Faucet Lever Knob, Black Plastic	10
70102-01	Faucet Lever, Brass	10
70102-02	Faucet Lever, Stainless Steel	10
70103-04	Faucet Shaft Assembly with Seat, Chrome Plated Brass	10
70103-05	Faucet Shaft Assembly with Seat, 303 Stainless	10
70103-05-304	Faucet Shaft Assembly with Seat, 304 Stainless	10
70104	Faucet Ball Washer	10

48 FAUCET PARTS

MODEL #	DESCRIPTION	PK
70105	Faucet Lever Collar, Chrome	10
70107	Faucet Body Gasket	10
70108	Faucet Friction Washer	10
70109	Faucet Shaft Nut, Nickle Plated Brass	10
70110	Faucet Shaft Valve Seat	10
70166-01	Faucet Bonnet, Chrome Plated Brass	10
BF1000SC-Kit	Faucet Retrofit Kit - Convert Standard Faucet to Self-Closing	1
SF2000-13	Stout Faucet Nozzle O-Ring	1
SF2000-14	Stout Faucet Jet Disc, Stainless Steel	1
SF2000-15	Stout Faucet Regulation Cone, Plastic	1
SF2000-16	Stout Faucet Leak Out Pipe, Stainless Steel	1
SF2000-2	Stout Faucet Lever Screw, Stainless Steel	1
SF2000-3	Stout Faucet Sliding Cap, Plastic	1
SF2000-4	Sout Faucet Screw Cap O-Ring	1
SF2000-9	Stout Faucet Upper Piston O-Ring	1
SF2000-1	Stout Faucet Lever, Chrome Plated Brass	1



70105



70107



70108



70166-01



BF1000SC-Kit

For Ale & Lager type beers, the pouring process is:

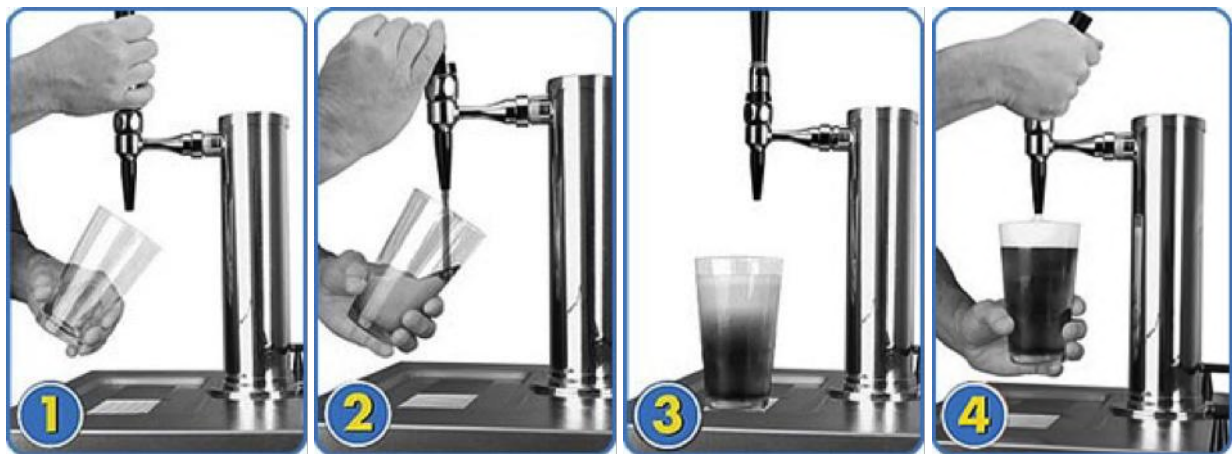
Start with a glass clean of any residue, including soap film.



1. Place the glass at a 45° angle, one inch below the faucet. Do not let the glass touch the faucet. Open the faucet completely in one, swift motion.
2. After the glass has reached ½ full, gradually bring the glass to an upright position.
3. Let the remaining beer pour straight down the middle. This ensures proper release of CO₂ by producing a ¾" to 1" foam head.
4. Close the faucet completely and quickly.

For Stout type of beers, the pouring process is:

Start with a glass clean of any residue, including soap film.



1. Place the glass at a 45° angle, one inch below the faucet. Do not let the glass touch the faucet. Open the faucet completely in one, swift motion.
2. Once the glass is ¾ full, close the faucet completely in one, quick motion.
3. Place the glass on the bar counter and allow the surging beer to settle.
4. Once the surge has settled, fill the glass to the brim, pouring straight down the middle of the glass. Close the faucet completely in one, swift motion.