

# FLAKER & CUBELET SERIES | ICE MACHINES



# HOSHIZAKI

HOSHIZAKI. BEYOND STRONG.

[hoshizakiamerica.com](http://hoshizakiamerica.com)



# HOSHIZAKI

## FLAKER & CUBELET SERIES | ICE MACHINES FLAKER & CUBELET SERIES

### CHOOSING THE RIGHT ICE MAKER



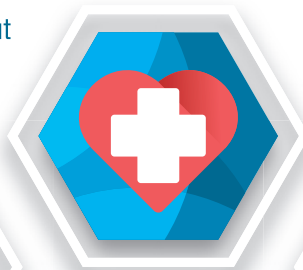
# HOW MUCH ICE DO YOU NEED?

Before choosing an ice maker, take a look at how many customers you serve and what type of ice you will need



**Restaurants**  
use an average  
of **2 lbs.** of ice per  
customer per day

**Schools and university  
cafeterias** average about  
**1.5 lbs.** of ice per  
student per day



**Hospital cafeterias**  
use about **1 lbs.** of ice  
per person per day and  
an average of **10 lbs.**  
for every bed

**Bars and cocktail  
lounges** use  
about **3 lbs.** of  
ice per seat



**Hotels** use  
about **5 lbs.** of ice  
per room per day.

Volume of ice used

**X** Number of  
customers served

---

**=** The type of ice  
maker you need

Your menu should dictate  
your machine—not the other way around

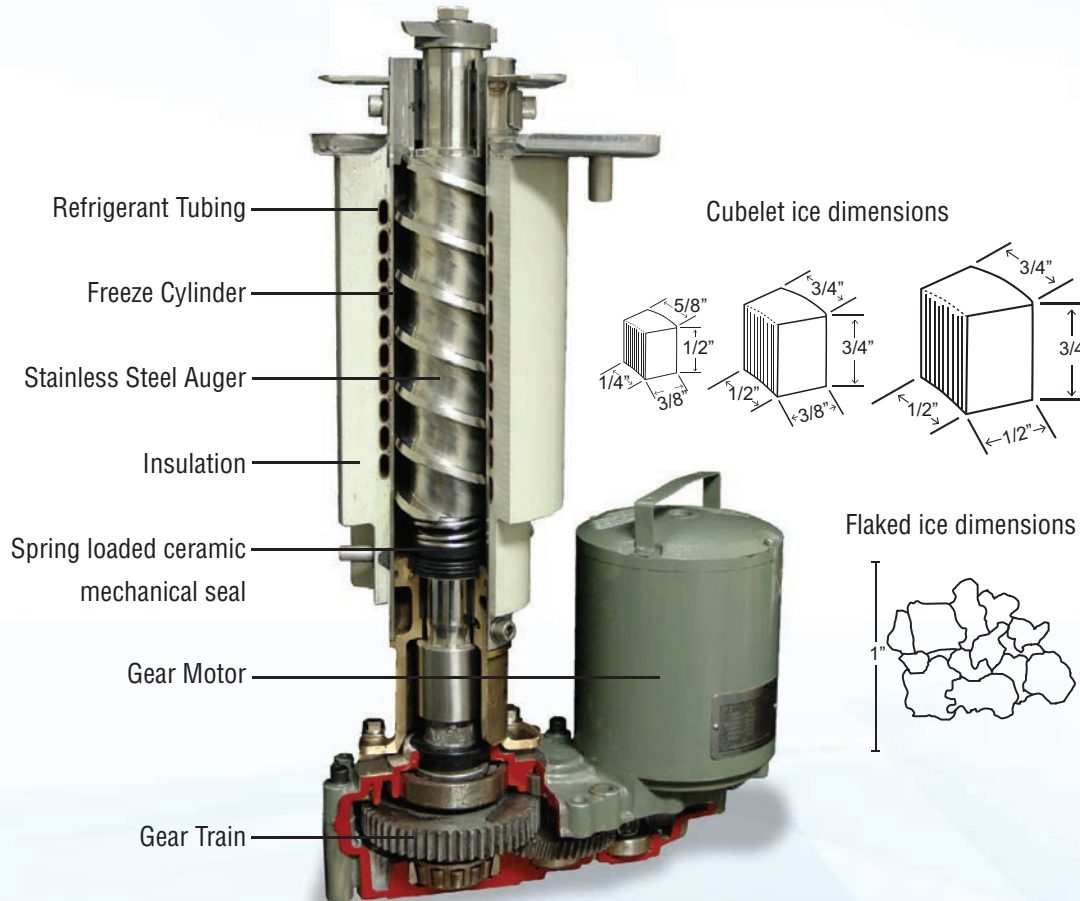
Visit  
[hoshizakiamerica.com](http://hoshizakiamerica.com)  
to find the ice machine  
that's right for you



# HOSHIZAKI

## FLAKER & CUBELET SERIES | ICE MACHINES INTERNAL AUGER DESIGN

HOSHIZAKI Flaker and Cubelet ice machines are designed with a durable stainless steel internal auger system that produces the highest quality of ice with fewer repairs and less down-time, and has achieved excellent efficiency results for the amount of ice produced.



### FEATURES

Dual flight auger

Anti-magnetic auger and barrel

Low kilowatt consumption

Hardened bearing surface on auger

Spline cut alignment

Graphite bearings

Heavy duty ventless gear box

### BENEFITS

Evenly distributes load, reduces torque of gear box

Reduces mineral build up

Excellent energy efficiency results

Extends the life of bearings

Insures balance

Greaseless, water friendly and increases longevity

More reliable, less contaminants



# HOSHIZAKI

## FLAKER & CUBELET SERIES | ICE MACHINES EVAPORATOR BARREL

The evaporator has a durable freezing cylinder with insulated foamed-in-place polyurethane. The stainless steel auger shaves and moves ice upward in the cylinder. Water is squeezed from the ice as it passes through the extruding head providing hard, dry flakes. The unitized motor and gear train that drives the internal auger is sealed against moisture for dependability. Cubelet ice is flaked ice compressed and cut into cubelets by the extruding head cutter.

### FEATURES

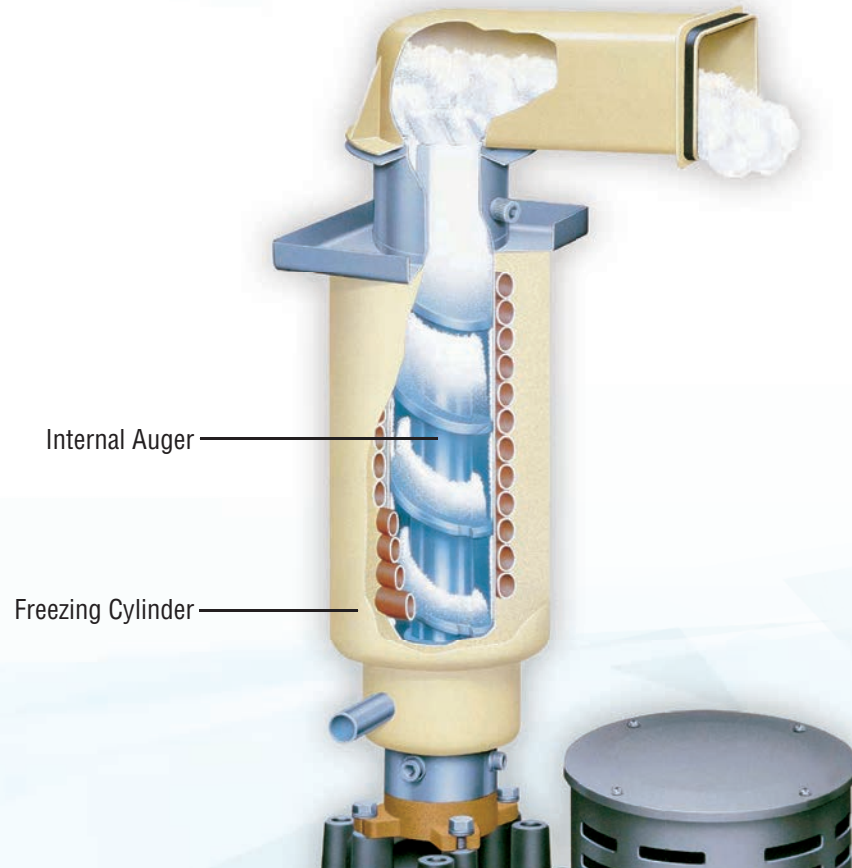
Durable anti-magnetic stainless steel freezing cylinder

Refrigerant tubing is insulated within the foamed in place polyurethane

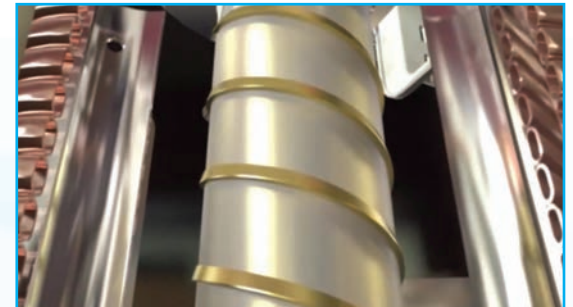
### BENEFITS

Reduces mineral build-up

Tight sealed foam reduces condensation and water penetration



Watch the video







# HOSHIZAKI

## FLAKER & CUBELET SERIES | ICE MACHINES **FLAKED & CUBELET ICE**

HOSHIZAKI flaked ice is dry and cools more quickly than other forms of ice. This cooling power is combined with very low production costs. Flaked ice molds to any shape for convenient use in displays and salad bars.

### **Flaked Ice**



Each piece of Cubelet Ice is uniquely shaped. An extruding head squeezes water from the ice and extrudes a piece that is broken away by a special cutter. Cubelet ice is easy to chew and lasts much longer than flaked ice making this type of ice preferred in the healthcare industry. Cubelet ice machines are also designed to be paired with beverage dispensers providing customers a great beverage experience.

### **Cubelet Ice**

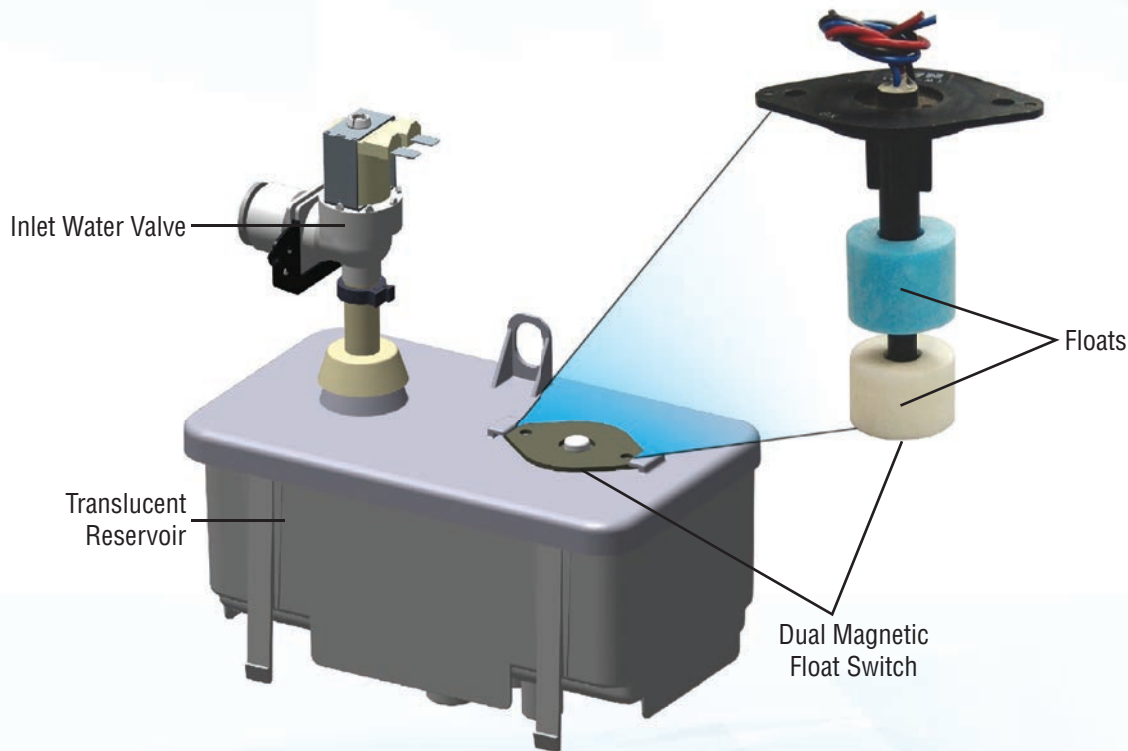




# HOSHIZAKI

## FLAKER & CUBELET SERIES | ICE MACHINES DUAL MAGNETIC FLOAT SWITCH

The water supply system features a dual magnetic float switch. The top float controls water supply, while the bottom float protects the machine with low water safety shut down.



### FEATURES

Inlet Water Valve

Translucent Reservoir

Dual Magnetic Float Switch

### BENEFITS

Allows accurate water supply from 10-113psig

Visual water check assists machine diagnosis

Top float controls water supply  
Bottom float protects machine with low water safety shutdown

Results in equal water level in evaporator allowing consistent ice shape and hardness



# HOSHIZAKI

## FLAKER & CUBELET SERIES | ICE MACHINES

# SIMPLE CONTROLS

The state of the art design of HOSHIZAKI Ice Machines has improved serviceability:

By eliminating the problem areas such as complicated electronic controls, plated surface evaporators, extrusions, and critical adjustments, our machines are considerably easier to diagnose.

Easy access - the majority of all service and maintenance can be accomplished from the front of the unit.

These controls are located in a dry environment, greatly improving electrical component reliability.

HOSHIZAKI Flaker & Cubelet ice machines feature the EverCheck™ Control Board, with audible alarm and diagnostic features; designed to assist service technicians in diagnosing problems.

### FEATURES

Float switch control terminates freeze cycle

Automatic water safety shut off

Thermistor controlled termination

Three point check diagnosis

Ten or fifteen minute cycle check

High temp lock out

### BENEFITS

Consistent ice formation under all ambient conditions

Protection from water loss, or filter restriction

Eliminates mechanical moving parts: less down time, fewer repairs, longer life

Easy to troubleshoot

Quick diagnosis

Protects refrigeration components and prevents failures





# HOSHIZAKI

## FLAKER & CUBELET SERIES | ICE MACHINES ADVANCED CLEANCYCLE24™

### ADVANCED



The Advanced CleanCycle24™ design featured in HOSHIZAKI Flaker and Cubelet ice machines, drains the reservoir and evaporator every hour. This 2 second rinse every hour washes away impurities and minerals, producing cleaner ice. This feature ensures cleanliness of the ice maker, leading to less down time for cleaning and maintenance.



HOSHIZAKI Flaker and Cubelet Ice Machines with self-contained air-cooled condensers are designed with a removable, cleanable air filter. This protects the machine and its interior components from dust, lint, flour and grease; therefore, reducing maintenance costs and extending the life of the machine.

### FEATURES

Advanced CleanCycle24™

### BENEFITS

- Drain and rinse complete water system
- Improves sanitation and reliability
- Increases bearing, auger and evaporator life
- Reduces mineral build-up

### FEATURES

Removable, cleanable air filters

### BENEFITS

- Reduces maintenance costs
- Extends machine life
- Protects machine and interior components from dust, lint, flour and grease

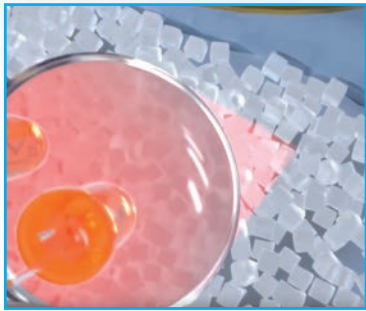




# HOSHIZAKI

## FLAKER & CUBELET SERIES | ICE MACHINES INFRARED BIN CONTROL / ANTIMICROBIAL

### INFRARED BIN CONTROL



Keep your ice bin or dispenser topped off with ice, but never overflow! The infrared sensor shoots a beam onto the rising pile of ice and measures how much light bounces back. When the bin or dispenser is full, the beam trips the sensor, shutting down the compressor.

Touchfree bin control results in better sanitation and accurate ice level adjustments. It also has a better shutdown and start up sequence which increases the life of refrigeration components.

Watch the video



### WATER FILTRATION

HOSHIZAKI water filters keep your equipment running smoothly while maximizing its efficiency. Water filtration improves the taste of the drinks you serve and delivers consistent results every time.



H-GUARD Plus® Antimicrobial Agent is embedded in the ice machine key components; it inhibits the growth of bacterial, mold, and other microorganisms.

### FEATURES

HOSHIZAKI water filters are available in single, twin, and triple configurations

### BENEFITS

Keeps ice machine functioning at full capacity

Reduces up to 99.9% of disinfectant chlorine from incoming water supply



**HOSHIZAKI  
Water Filters  
(Optional Accessory)**



# HOSHIZAKI

## FLAKER & CUBELET SERIES | ICE MACHINES WARRANTY

### Warranty

- 3 Year Warranty parts and labor on entire unit (Flaker, Cubelet and DCM Series models)
- 5 Year Warranty on parts for the compressor and air-cooled condenser
- 2 Year Warranty parts and labor for C101 undercounter
- QR Code on the back or inside front/top panel of each unit for easy access to warranty and service information

### Customer Commitment

Our commitment to quality continues after the sale. To ensure your HOSHIZAKI equipment operates at its optimum, we provide the following:

- An established field service network
- Toll-Free Technical Support Line 24 hours, 7 days a week, including holidays - 800-233-1940
- Multi-level training



Warranties are valid in the United States, Puerto Rico, & U.S. Territories only. Contact factory for warranty information in other Countries. Refer to manufacturer's full warranty for complete details.

Please visit our website: [hoshizakiamerica.com](http://hoshizakiamerica.com) to find additional information regarding Hoshizaki's full line of equipment and services, including training schools and factory tours, that are available.





# HOSHIZAKI

## FLAKER & CUBELET SERIES | ICE MACHINES FLAKER, CUBELET & DISPENSER SERIES

### UNDERCOUNTER FLAKERS with BUILT-IN BINS



**\*F-330**  
24"W x 26"D x 39"H  
Up to 332 lbs. of ice per 24 Hrs.



**\*F-300 / \*F-500**  
36"W x 24"D x 39"H  
38"W x 29"D x 42"H  
Up to 353-536 lbs. of ice per 24 Hrs.

### MODULAR FLAKERS / CUBELET BINS SOLD SEPARATELY



**F-450(-C)**  
22"W x 27 3/8"D x 22"H  
Up to 492 lbs. of ice per 24 Hrs.



**\*F-801(-C)**  
22"W x 27 3/8"D x 25 15/16"H  
Up to 751 lbs. of ice per 24 Hrs.



**\*F-1002(-C)**  
22"W x 27 3/8"D x 25 15/16"H  
Up to 1028 lbs. of ice per 24 Hrs.



**\*F-1501(-C)**  
30"W x 27 1/2"D x 34 7/16"H  
Up to 1705 lbs. of ice per 24 Hrs.



**F-2001(-C)**  
30"W x 27 1/2"D x 34 7/16"H  
Up to 2280 lbs. of ice per 24 Hrs.

### UNDERCOUNTER CUBELET with BUILT-IN BINS



**\*C-101**  
14 7/8"W x 22 5/8"D x 33 1/2"H  
Up to 92 lbs. of ice per 24 Hrs.



**\*F-330-C**  
24"W x 26"D x 39"H  
Up to 288 lbs. of ice per 24 Hrs.

### DISPENSER SERIES CUBELET DISPENSER SOLD SEPARATELY



**\*FD-650-C**  
22"W x 24"D x 26"H  
Up to 650 lbs. of ice per 24 Hrs.



**FD-1002-C**  
22"W x 24"D x 26"H  
Up to 940 lbs. of ice per 24 Hrs.



**FS-1001**  
30"W x 11"D x 26"H  
Up to 830 lbs. of ice per 24 Hrs.



**FS-1022**  
30"W x 11"D x 26"H  
Up to 830 lbs. of ice per 24 Hrs.



**FS-1500**  
30"W x 16 1/2"D x 33"H  
Up to 1491 lbs. of ice per 24 Hrs.

### SERENITY SERIES

### ICE and WATER DISPENSERS STANDS SOLD SEPARATELY



**DCM-270**  
16 9/16"W x 24 1/8"D x 31 11/16"H  
Up to 282 lbs. of ice per 24 Hrs.



**DCM-300 / 500**  
26"W x 22 1/2"D x 40"H  
Up to 321-618 lbs. of ice per 24 Hrs.



**DCM-751**  
34 1/16"W x 28 1/2"D x 48 1/16"H  
Up to 801 lbs. of ice per 24 Hrs.



**DM-200**  
30"W x 28"D x 36 3/8"H  
200 lbs. ice storage capacity



**DCM-270-OS**  
16 9/16"W x 24 1/8"D x 31 11/16"H  
Up to 288 lbs. of ice per 24 Hrs.



**DCM-300-OS / 500-OS**  
26"W x 22 1/2"D x 40"H  
Up to 321-618 lbs. of ice per 24 Hrs.



**DCM-751-OS**  
34 1/16"W x 28 1/2"D x 48 1/16"H  
Up to 801 lbs. of ice per 24 Hrs.

### ICE and WATER DISPENSERS (Hands-Free) STANDS SOLD SEPARATELY





**Peachtree City, GA**  
Corporate Headquarters & Manufacturing

**HOSHIZAKI** is a global leader in the design, manufacturing, and marketing of equipment for the foodservice industry. With their corporate office located in Peachtree City, Georgia, HOSHIZAKI produces the highest level of excellence in ice machines and refrigeration equipment. Delivering continuous innovation, durability and style, the HOSHIZAKI name is synonymous with reliability and customer commitment.



**Griffin, GA**  
Manufacturing



# HOSHIZAKI

**HOSHIZAKI. BEYOND STRONG.**

**HOSHIZAKI AMERICA, INC.**

618 Highway 74 South, Peachtree City, GA 30269

Toll Free: (800) 438-6087 | Fax: (800) 345-1325

[hoshizakiamerica.com](http://hoshizakiamerica.com)



03/28/2017 | Item #40081

