

QUICK REFERENCE GUIDE FOR OPERATION AND MAINTENANCE

of FBD Frozen Carbonated Dispensers



MAINTENANCE SCHEDULE:

DAILY MAINTENANCE:

- WASH ALL EXTERIOR SURFACES OF UNIT WITH A MILD SOAP SOLUTION. RINSE WITH CLEAN WATER. WIPE DRY WITH A CLEAN, SOFT CLOTH.
- REMOVE (IF NOT CONNECTED TO DRAIN PLUMBING) AND WASH DRIP TRAY IN MILD SOAP SOLUTION. RINSE WITH CLEAN WATER. REINSTALL DRIP TRAY ON UNIT, IF NECESSARY.

QUARTERLY MAINTENANCE:

- REMOVE, WASH, AND DRY AIR FILTER(S). REINSTALL WHEN COMPLETED.

YEARLY MAINTENANCE:

- REAR SEALS FOR BEATER MOTORS NEED TO BE INSPECTED AND SERVICED.

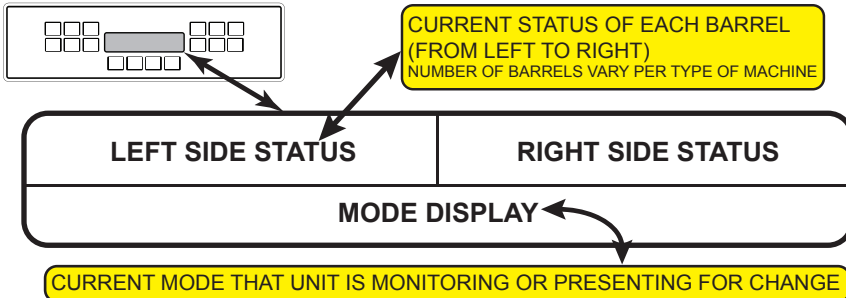
WARNING LIGHT DEFINITIONS AND CORRECTIVE SOLUTIONS:

STYLES OF FBD
WARNING/STATUS INDICATORS



WARNING LIGHT STATUS	CAUSE	LCD DISPLAY MESSAGE	SOLUTION
RED LIGHT FLASHING (ANY SINGLE BARREL)	OUT OF SYRUP FOR BARREL	SYRUP OUT	REPLACE EMPTY SYRUP (BIB) CONTAINER.
ALL RED LIGHTS FLASHING (ALL BARRELS)	(a) OUT OF CO2 (b) OUT OF WATER (H2O)	(a) CO2OUT (b) H2OOUT	(a) REPLACE EMPTY CO2 TANK. (b) CHECK WATER (H2O) SUPPLY.
RED LIGHT CONTINUOUSLY ON (ANY BARREL)	UNIT DEFROSTING	DEFROSTING	IF ON DEFROST DURING PEAK DRAW, CANCEL DEFROST BY PUSHING “DEF”, THEN PUSH “RUN”.
RED LIGHT CONTINUOUSLY ON (ANY BARREL)	UNIT IN FIRST FREEZE AFTER DEFROST	NO MESSAGE ON DISPLAY	WAIT UNTIL UNIT COMPLETES DEFROST AND FREEZE DOWN CYCLE.
ALL RED LIGHTS ON AND BEATERS NOT TURNING	(a) UNIT IS IN “SLEEP” MODE (b) UNIT IS TURNED OFF	(a) SLEEPING (b) RUN OFF	(a, b) RESTART UNIT BY PUSHING “DEF” BUTTON THEN “RUN” BUTTON ON BOTH SIDES
NO LIGHTS, UNIT IS NOT RUNNING	UNIT IS NOT PLUGGED IN OR BREAKER HAS BEEN TRIPPED	NO MESSAGE ON DISPLAY	PLUG IN UNIT OR RESET CIRCUIT BREAKER. THEN RESTART UNIT.

ELECTRONIC DISPLAY:



DISPLAY ERROR MESSAGES REQUIRING SERVICE:

NOTE: ALL THE FOLLOWING CODES WILL SHUTDOWN THE MACHINE EXCEPT **MAX FILL** CODE. CONSULT MANUAL FOR ALL OTHER CODES AND CORRESPONDING MESSAGES.

BTR-LO-ERR	LOW BEATER PERCENT
BTR-HI-ERR	HIGH BEATER PERCENT
TANKPSI=0	CHAMBER PRESSURE EQUALS ZERO (0)
SFILLERROR	CHAMBER FILLING PRESSURE ERROR
CMP RAN TOO LONG OFF	COMPRESSOR RUNNING TOO LONG
HOT PRODUCT SHUT DOWN	PRODUCT IN BARREL TOO HOT
MAX FILL	CO2 PRESSURE TOO HIGH

NOTE: THIS GUIDE IS NOT INTENDED TO REPLACE THE IMPORTANT DETAILED INFORMATION CONTAINED IN THE OPERATIONAL MANUAL. READ ENTIRE MANUAL BEFORE OPERATING UNIT.

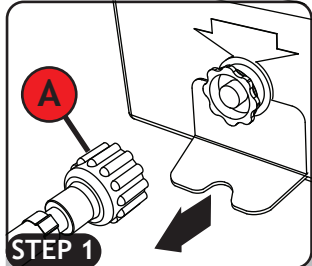
TOLL FREE CUSTOMER SERVICE - 1-866-323-2777 or www.fbd frozen.com/fbd/technical-support

QUICK REFERENCE GUIDE FOR (BIB) BAG IN BOX PROCEDURES

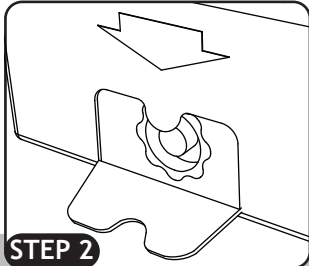
of FBD Frozen Carbonated Dispensers



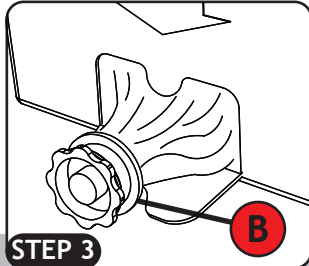
HOW TO CHANGE AN EMPTY BIB WITH A COCA-COLA® COMPATIBLE CONNECTOR:



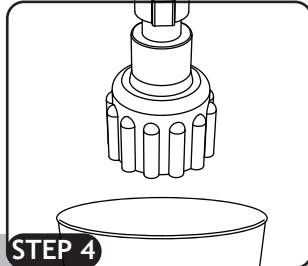
STEP 1
Unscrew connector "A" and remove empty box.



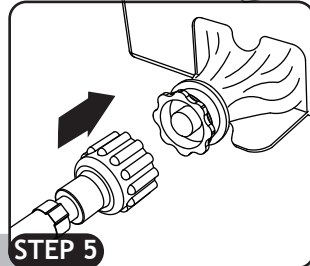
STEP 2
Place new BIB box on rack and open flap.
NOTE: DO NOT use a sharp instrument to open flap.



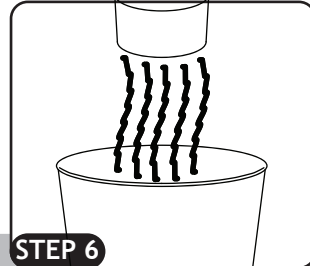
STEP 3
Pull bag connector "B" from box and remove dust cap.



STEP 4
Rinse connector "A" in warm water.

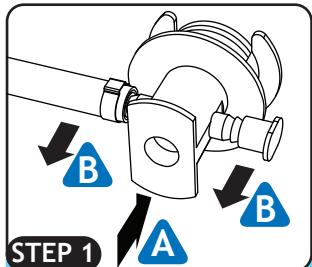


STEP 5
Screw connector "A" to connector "B".

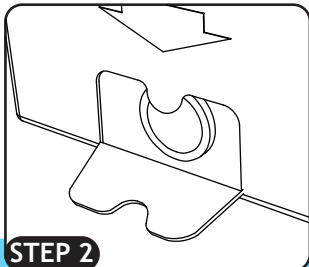


STEP 6
Resume operation.

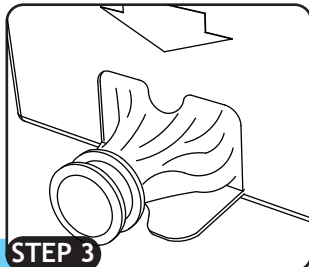
HOW TO CHANGE AN EMPTY BIB WITH A QCD COMPATIBLE CONNECTOR:



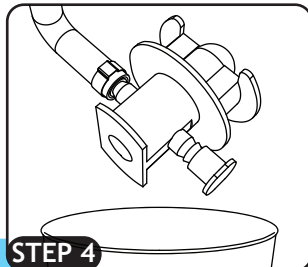
STEP 1
Remove QCD connector by pushing on part A & pulling on part B, then disengage from BIB.



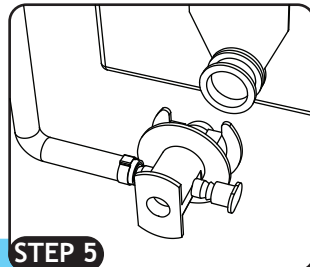
STEP 2
Place new BIB box on rack and open flap.
NOTE: DO NOT use a sharp instrument to open flap.



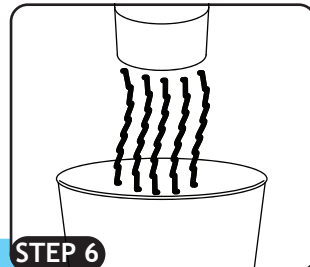
STEP 3
Pull bag connector "B" from box and remove dust cap.



STEP 4
Rinse QCD connector in warm water.



STEP 5
Install QCD connector on new BIB by using opposite technique shown in Step 1.



STEP 6
Resume operation.

HOW TO CHANGE FLAVORS WITHIN AN FCB MACHINE:

IMPORTANT:
USE PROCEDURE FOR CORRESPONDING BARREL AND BIB ONLY.

START:

1 OFF → DEF. note: Defrost time will take approximately 7 minutes.

2 while defrosting, remove old BIB and connect new BIB old → new

3 after defrost is complete, press FILL → BEATER

4 place a large bucket under the valve, then pour product until flavor/color has changed

5 BEATER keeping bucket underneath faceplate and vent valve, pull vent valve ring to purge excess gas and fill barrel with liquid, fill until level is at vent valve note: foam will exit the vent port on the faceplate underside, temporarily keep bucket in place

6 OFF note: to turn fill mode off DEF. → RUN note: this will freeze the product back down, this step will take approximately 4 to 5 minutes

7 after product is frozen and compressor turns off, pour several drinks to condition barrel note: the first few drinks will be very wet and heavy

TOLL FREE CUSTOMER SERVICE - 1-866-323-2777 or www.fbdFrozen.com/fbd/technical-support