

Please refer to the Ice-O-Matic website for the most current version of these instructions and approved cleaners and sanitizers.

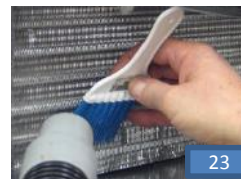
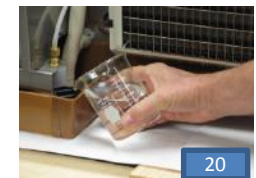
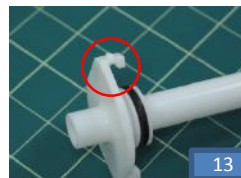
IOM recommends cleaning and sanitizing be performed every 6 months but no more than once per month .

CAUTION: Do not perform these cleaning procedures unless you are wearing protective eyewear and gloves.

Before beginning the cleaning and sanitation process, all ice must be removed from the ice bin.

1. Turn off the water supply to the ice maker.
2. Remove the front panel of the ice maker by removing the two panel screws with a Phillips head screwdriver.
3. Push the **ICE/OFF/WASH** to the **WASH** position.
4. Press and hold the **PURGE** switch until all of the water has been discharged from the water trough.
5. Push the **ICE/OFF/WASH** switch to the **OFF** position.
6. Mix approved nickel-safe ice machine cleaner (diluted per manufacturer's instructions) to yield one gallon of cleaning solution and pour into the water trough. Please refer to www.iceomatic.com for approved chemical formulations.
7. Push the **ICE/OFF/WASH** switch to **WASH** to indicate the wash cycle, allow the cleaner to circulate through the ice maker for approximately 15 minutes to remove mineral deposits.
8. Push the **ICE/OFF/WASH** switch to **OFF** to terminate the wash cycle.
9. Remove the splash curtain and inspect the evaporator and water spillway to verify that all mineral residue has been removed. If necessary, remove any remaining mineral residue from the evaporator, spillway and other water transport surfaces with a clean soft cloth.
10. Remove the water distribution tube for cleaning by removing the brass thumbscrews and plastic clamp.
11. Disassemble the water distribution tube by rotating the inner tube flange and sliding it out of the outer tube.
12. Clean the water distribution tube by using a bottle brush and removing all scale and mineral deposits.
13. Reassemble the water distribution tube, ensuring that the inner tube holes and the bump indicator are on the top. Reinstall the splash curtain making sure that the bin switch arm is on the outside of the splash curtain.
14. Clean the water trough. If there is significant scale, mineral and/or slime buildup in the water trough due to infrequent cleaning, **PURGE** the water from the trough then remove the water trough and clean it in a sink with a mixture of the cleaning solution. **Note:** If only mild buildup is present, the water trough can be wiped down as part of the cleaning process described in Step 20.
15. Turn **ON** the water supply to the ice maker and allow trough to fill.
16. Turn the switch to **WASH** and allow the fresh water to circulate for 1-2 minutes then press and hold the **PURGE** switch for 1-2 minutes until all of the cleaning solution has been flushed
17. Allow trough to fill with fresh water again and repeat Step 16.
18. Turn machine to **ICE** and make 2 batches of ice and discard the ice.
19. Turn **OFF** water supply and purge water trough.
20. Mix approved sanitizer (diluted per manufacturer's instructions) to yield one gallon of sanitizing solution and pour into the water trough.
21. Push the **ICE/OFF/WASH** switch to **WASH** to circulate the sanitizing solution through the ice maker for **10 minutes**. You can complete the next two tasks while the ice machine is being sanitized. Clean splash areas and interior surfaces.
22. While the ice maker is being sanitized, clean all splash areas and the interior surfaces of the ice bin deflector and door with the remaining sanitizing solution and a clean cloth, or you can use a soft brush if there are tough stains to remove.

CAUTION Do NOT use a chlorine-based cleaner on any stainless steel surfaces-use soap and water instead!



23. While the ice maker is being sanitized, clean the condenser fins with compressed air or a soft bristle brush. A vacuum cleaner can be used in conjunction with the brush to remove the dust and dirt particles that are brushed from the fins.
CAUTION: Be very careful when gently brushing the condenser fins to avoid bending them. If they are bent or distorted, the fins must be straightened with a fin comb.
24. Press and hold the **PURGE** switch until all of the sanitizer has been drained from the water trough.
25. Repeat Steps 15-17
26. Machine can now be placed back into operation
27. Replace the front panel and install the two panel screws with a phillips head screwdriver.

CAUTION: Discard the first two batches of ice that are produced after the ice maker has been cleaned and again after being sanitized!

ICE Machine Cleaner - Nickel Safe ice machine cleaner.
ICE Machine Sanitizer - Ice-O-Matic Approved Sanitizer