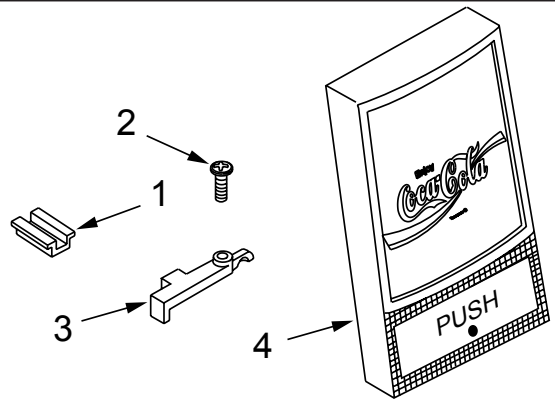


INSTRUCTION SHEET FOR LARGE PUSH BUTTON CONVERSION

CCUSA Item # 22796

The Conversion Kit (P.N. 82-1148/01) includes:

ITEM	PART NO.	DESCRIPTION	QTY
1	05-0491	Filler	1
2	04-0470	Screw	1
3	05-0490	Holder	1
4	54-0140	ID Panel Assy	1



NOTE: All parts in kit may not be needed.

See reverse for conversion from small Push Button to large Push Button.

CONVERSION FROM ELECTRIC LEVER TO LARGE PUSH BUTTON

STEP 1

- Remove I.D. Panel
- Loosen retainer screw. Remove Cover

STEP 2

- If attached to unit:
 - Disconnect wire harness (a)
 - Close valve stems (b)
 - Lift retainer (c) and remove valve

STEP 3

- Remove nozzle (d) by twisting left and pulling down
- Remove diffuser (e) assembly by pulling down
- Remove soda lever if applicable

STEP 4

- Remove six (6) screws in bottom plate
- Carefully remove bottom plate to assure pin springs are not lost

STEP 5

- Insert a flat head screwdriver between cup lever spring and lever to detach spring
- Pull the lever off of the pins on both sides of the valve to remove it

STEP 6

- Detach wire harness leads from micro switch
- Remove retainer and switch

STEP 7

- Route wire harness leads through upper body and connect leads to micro switch terminals "c" and "no"
- Mount micro switch onto front of bottom plate, using holder with tab (3) and screw (2)
- See reverse for correct positioning of micro switch

STEP 8

- Insert filler (1) into bottom plate with notch towards back of plate
- Place pin springs on studs of bottom plate.
- Reinstall plate
- If equipped with soda lever, replace with Front Soda/Water Button Kit (CCUSA PN 23430, Lancer PN 82-1458)

STEP 9

- Install diffuser assembly and nozzle
- Install valve on mounting block and latch wire retainer
- Reconnect wire harness
- Turn both valve stems to open position
- Check for leaks
- Install cover and tighten retainer screw
- Install ID Panel (4) with large push button
- Ensure proper operation

LANCER

6655 LANCER BLVD. • SAN ANTONIO, TEXAS 78219 USA • (210) 310-7000

FAX SALES

• USA-CANADA – 210-310-7250 • LATIN AMERICA – 210-310-7245 • ASIA – 210-310-7242 •

• EUROPE – 32-2-755-2399 • PACIFIC – 61-8-8268-1978 •

FAX ENGINEERING: • 210-310-7096

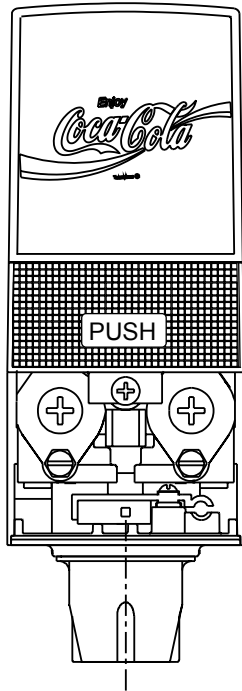
"Lancer" is the registered trademark of Lancer • Copyright — 1997 by Lancer, all rights reserved.

Check out the Lancer web site:
www.lancercorp.com

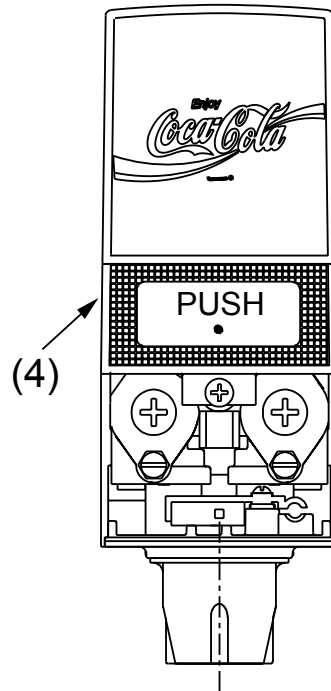
DATE: 08/15/97
P.N.:28-0115/02

CONVERSION FROM SMALL PUSH BUTTON TO LARGE PUSH BUTTON

1



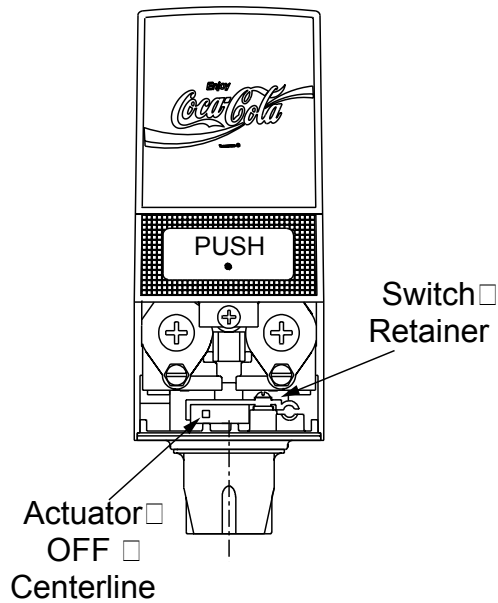
2



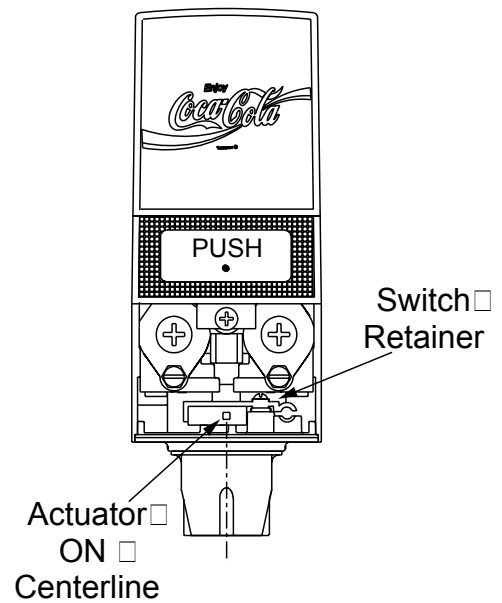
- Remove existing I.D. Panel with small push button by pulling upward

- Install new I.D. Panel with large push button (4)

ILLUSTRATION FOR CORRECT POSITIONING OF MICRO SWITCH



INCORRECT



CORRECT